



SWACHH

@swachhio | www.swachh.io



SN95

Shield

Wide Shield

2 Colors

6 Layer

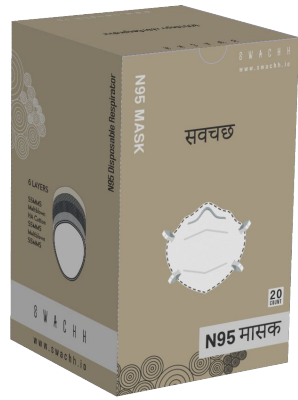
BIS/EN



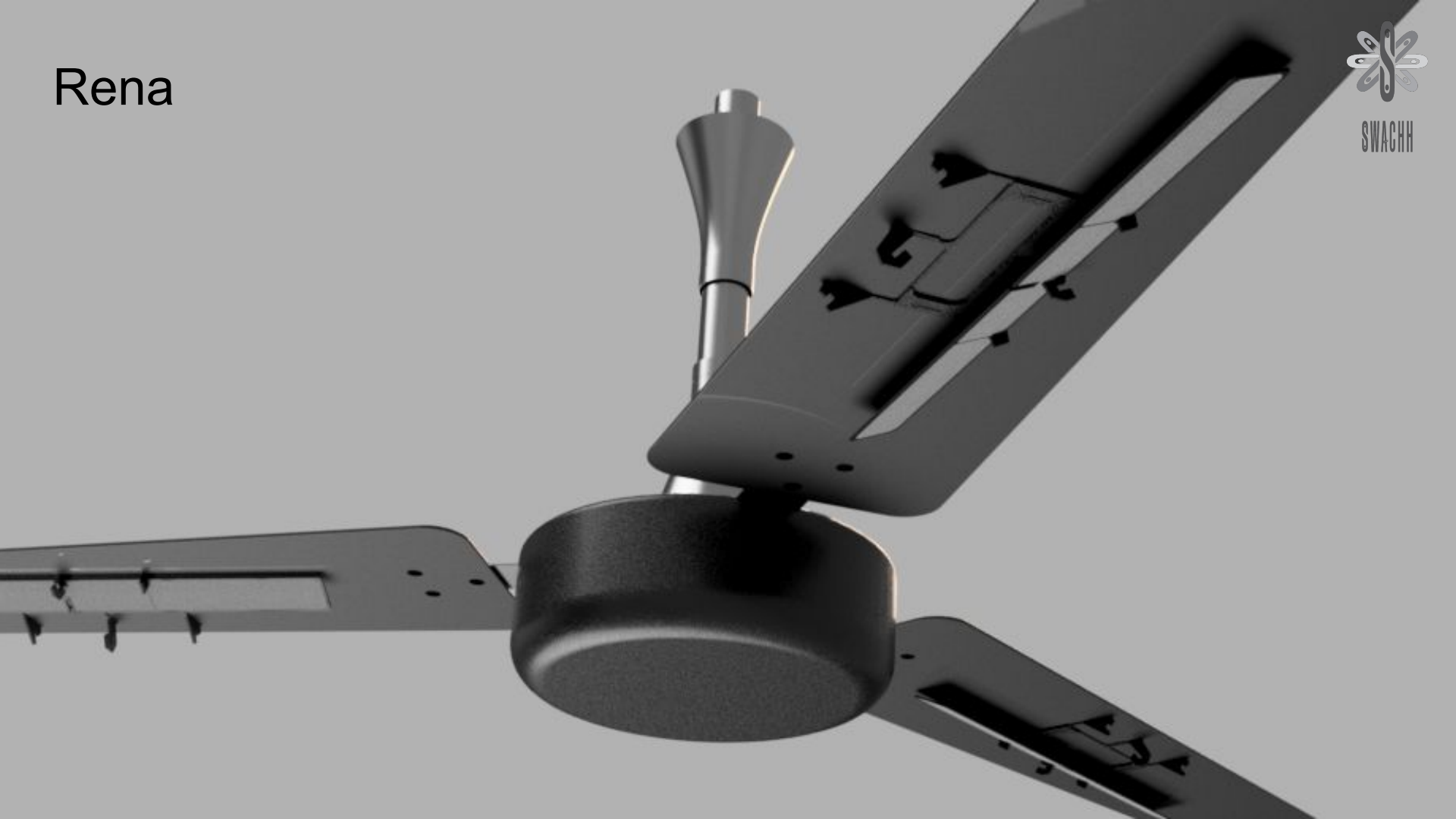
# SN95

Sports Valve

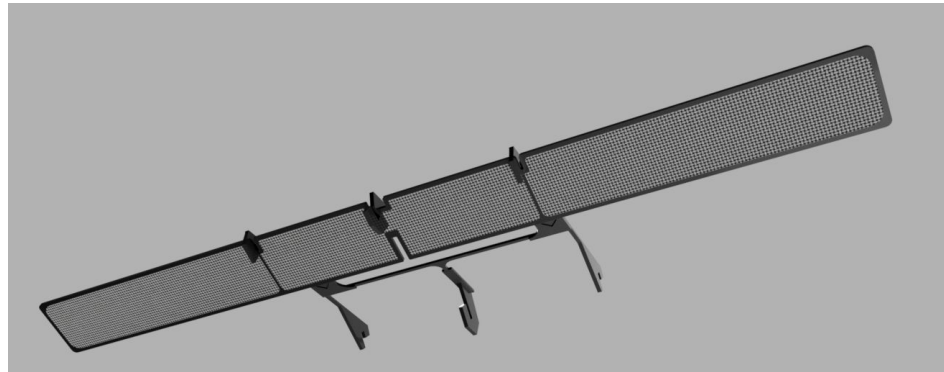
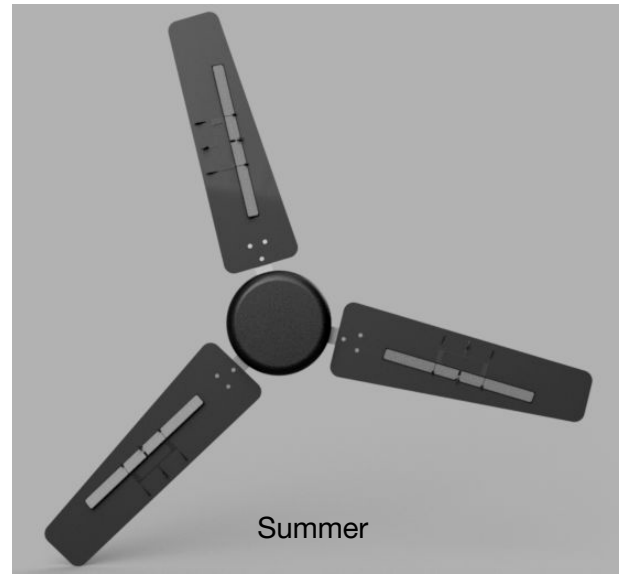
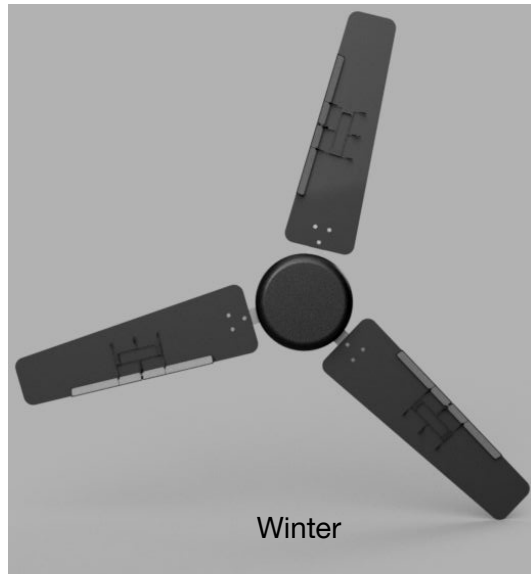
Fragrance



Rena



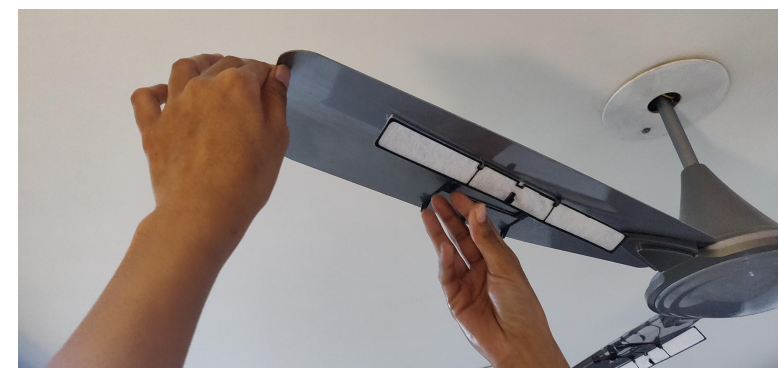
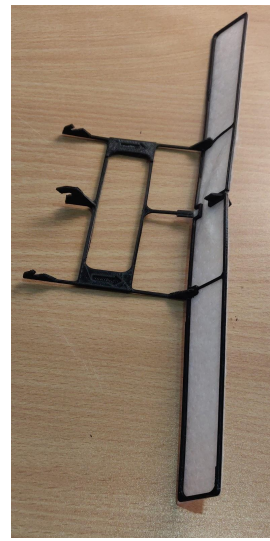
# Rena



# Rena

IKEA's SPACE10 Lab

Provisional Patent

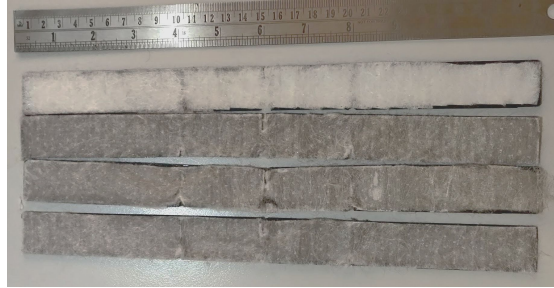


# Rena

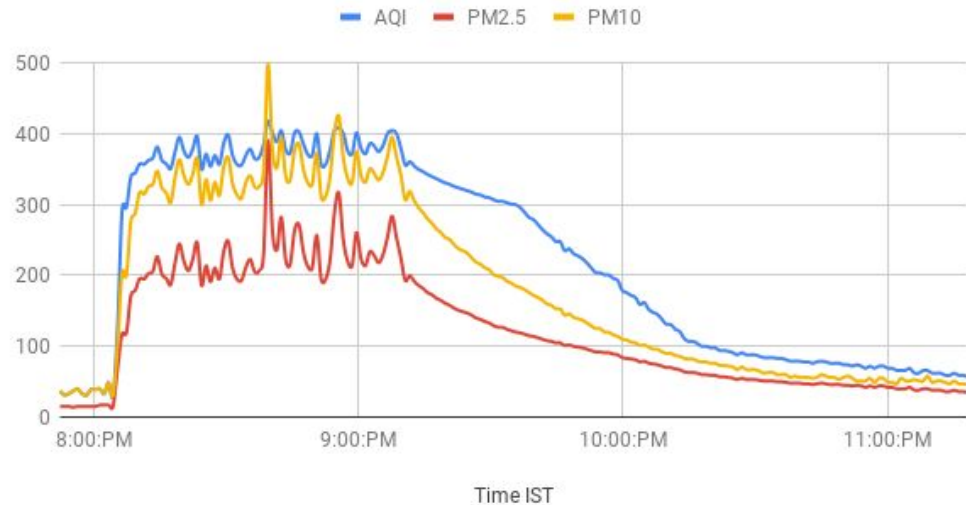
Tested the performance with indoor air quality sensor to benchmark performance.

## Results

- PM2.5 half in **35 Minutes**
- AQI from 350 to 100 in **1 Hour**
- Severe to Satisfactory
- AQI from 350 to 60 under **2 Hours**
- Severe to Good
- PM10  $320 \mu\text{g}/\text{m}^3$  to  $100 \mu\text{g}/\text{m}^3$  in **1 Hour**
- Estimated replacement 200 AQI - 2 weeks

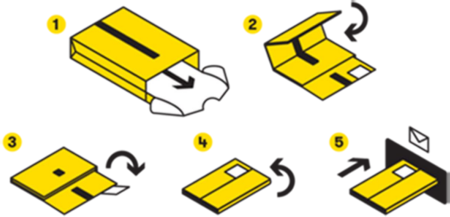
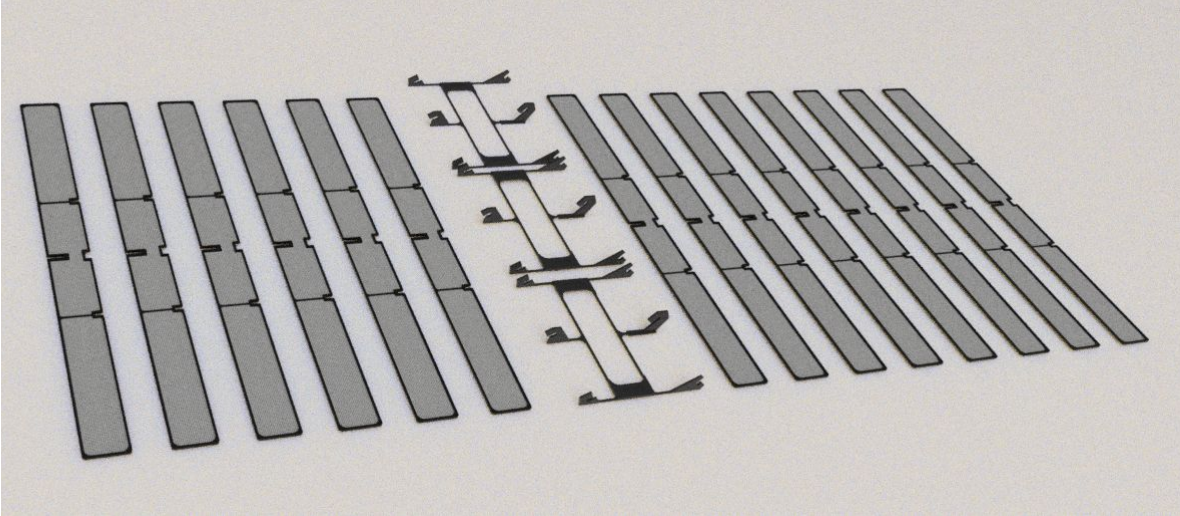


AQI, PM2.5, PM10



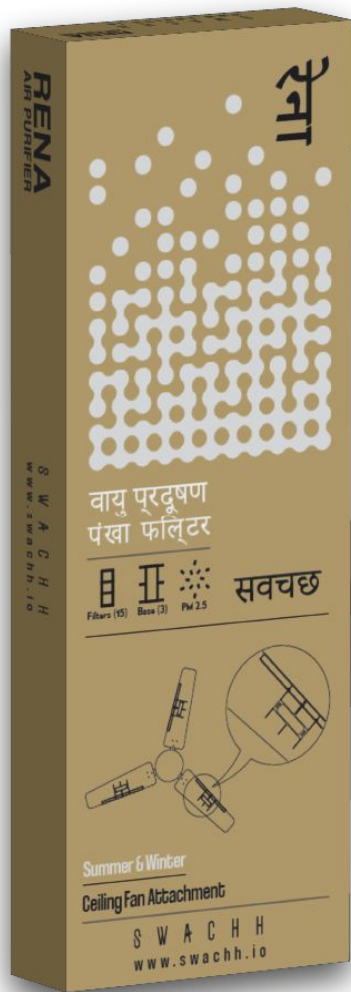
# Rena

- Washable Filters x 3
- Single Use Filters x 12

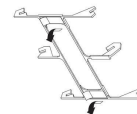




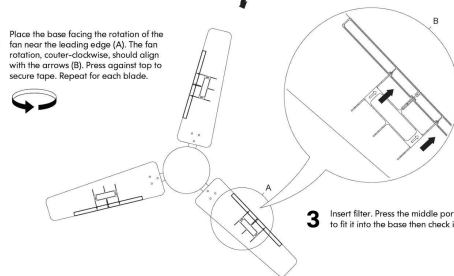
# Rena



- 1 Clean the fan blade to eliminate dust, the logo will adhere better. Peel both tapes off the base.



- 2 Place the base facing the rotation of the fan near the leading edge (A). The fan rotation, counter-clockwise, should align with the arrows (B). Press against top to secure tape. Repeat for each blade.



- 3 Insert filter. Press the middle portion of the filter to fit it into the base then check if it is secured.

